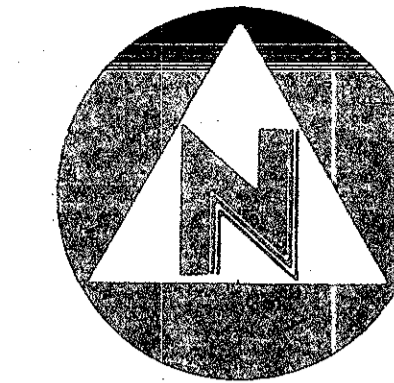


LAKES OF BOCA BARWOOD PLAT NO. 1

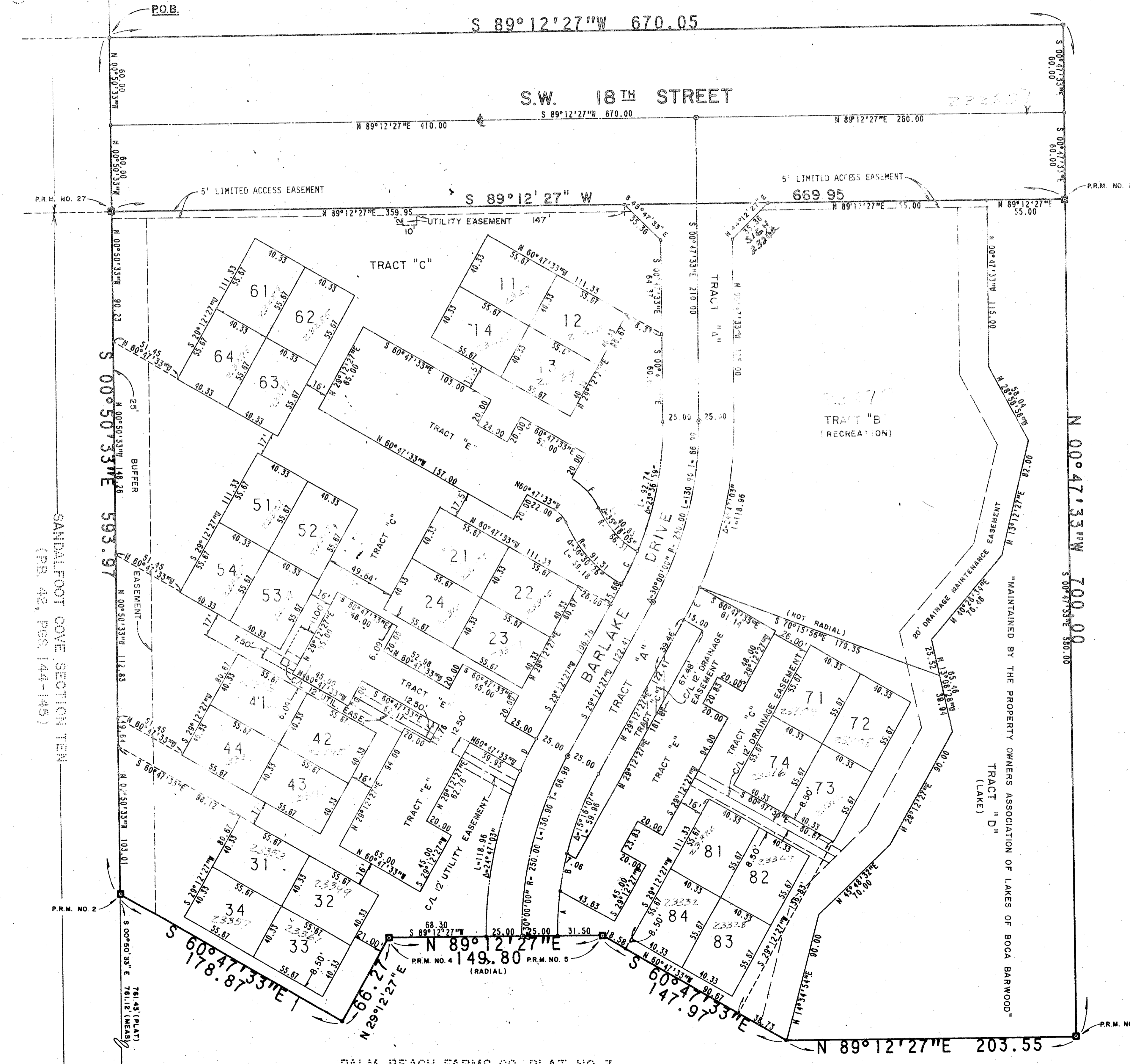
BEING A REPLAT OF PART OF TRACTS 13, 14, 19, AND 20, BLOCK 83, PALM BEACH FARMS COMPANY PLAT NO. 3, PLAT BOOK 2, PAGES 45-54, INCLUSIVE, LYING IN SECTION 32, TOWNSHIP 47 SOUTH, RANGE 42 EAST, PALM BEACH COUNTY, FLORIDA. APRIL, 1982

PALM BEACH FARMS CO.
PLAT NO. 3
(PB. 2, PGS. 45-54)



0' 20' 40' 80'
GRAPHIC SCALE

STATE OF FLORIDA
COUNTY OF PALM BEACH
THIS PLAT WAS FILED FOR
RECORD AT 11
THIS DAY OF
A.D., 19 AND DULY RE-
CORDED IN PLAT BOOK
ON PAGES AND
JOHN B. DUNKLE, CLERK
CIRCUIT COURT
BY: DC



AREA SUMMARY

R/W S.W. 18th AVE.	1.846 ACRES
TRACT "A" (ROAD R/W)	0.628 ACRES
TRACT "B" (RECREATION)	1.288 ACRES
TRACT "C" (COMMON AREA)	2.703 ACRES
TRACT "D" (LAKE)	1.234 ACRES
TRACT "E" (PARKING)	0.799 ACRES
LOTS	1.649 ACRES
TOTAL BOUNDARY	10.147 ACRES

PLANNED UNIT DEVELOPMENT TABULATIONS

TOTAL AREA THIS PLAT	10.147 ACRES
LESS ROAD RIGHT OF WAYS	2.474 ACRES
EQUALS EFFECTIVE BASE RESIDENTIAL AREA	7.673 ACRES
TOTAL UNITS THIS PLAT	32 PROPOSED
OPEN SPACE THIS PLAT	6.3 ACRES
DENSITY	3.2 UNITS PER ACRE

ID	RADIUS	DELTA	ARC LGT	TANGENT
A	225.00	8°00'34"	31.45	15.75
B	225.00	6°43'19"	26.40	13.21
C	225.00	6°23'01"	25.07	12.55
D	275.00	5°12'57"	25.03	12.53
E	275.00	5°12'57"	25.03	12.53
F	45.00	36°30'25"	28.67	14.84
G	20.00	36°30'25"	12.74	6.60

0306-314

0306-314

BENCH MARK
land surveying and mapping, inc.

JOHN D. SCHAEFER CONSULTING ENGINEERS, INC.
COUNTY, FLORIDA

44/180

**LAKES OF BOCA BARWOOD
PLAT NO. 1**

DESIGNED	DRAWN	CHECKED	JOB NO.	DRAWING NO.
DATE	SCALE	APPROVED	FILE NO.	SHEET OF
				2 OF 2